

The Cagayan River Basin: Admin. Area

Basin Area = 27,753 sq. km.

15 Sub-Basins

3 Regions

9 Provinces

5 Cities

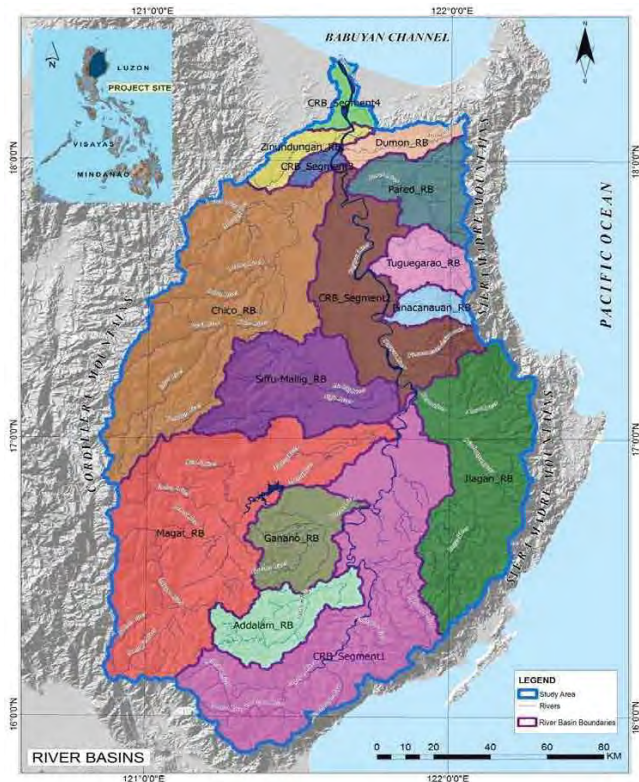
104 Municipalities/Towns

2,453 Barangays/Villages



Cagayan River Basin Sub Basins/Watersheds

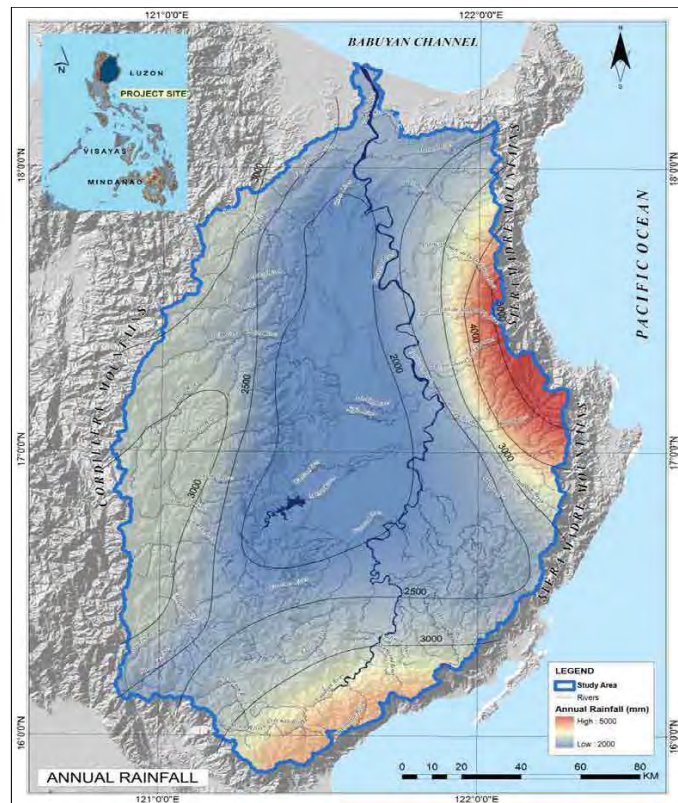
Basin Name	Drainage Area (sq.km)
1. AddalamRB	1,047.0
2. GananoRB	1,148.0
3. MagatRB	5,156.1
4. Cag.River(Segment 1)	4,771.1
5. Ilagan RB	3,182.4
6. Siffu-MalligRB	1,976.6
7. PinacanauanRB	335.3
8. Pared RB	1,041.9
9. TuguegaraoRB	666.5
10. Cag.River(Segment 2)	2,432.7
11. Chico RB	4,674.1
12. DumonRB	443.1
13. Cag.River(Segment 3)	176.7
14. ZinundunganRB	418.0
15. Cag.River(Segment 4)	283.2



CLIMATIC FEATURES

Basin **annual rainfall** varies from less than 2,000 mm in the lowland to more than 4,000 mm in the mountainous areas

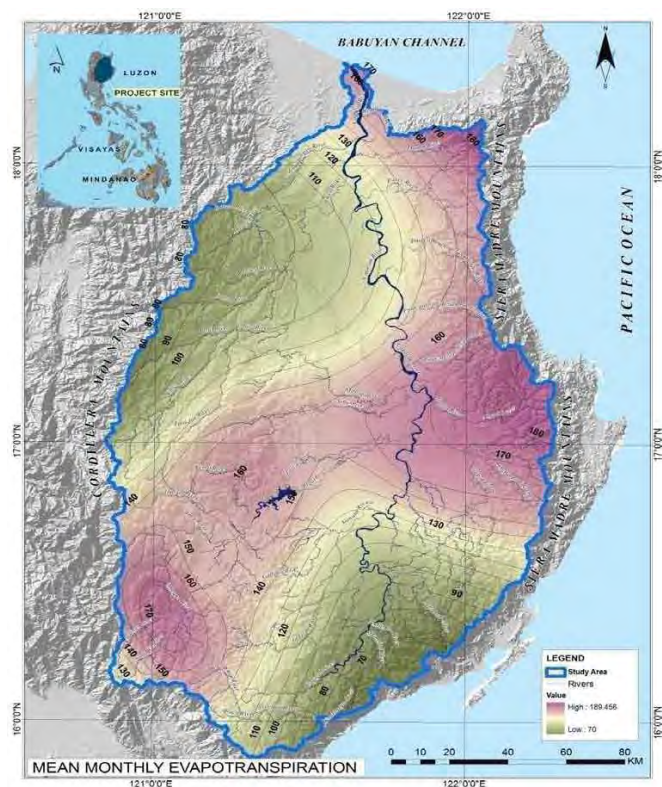
Monthly mean air **temperature** ranges from 23.1°C in January to 29.0°C in May, and the annual mean air temperature is 26.4°C at Tuguegarao.



21

Evapotranspiration

- Maximum evaporation is recorded in April and minimum is in December
- Annual mean daily evaporation was recorded between 3.5 mm at Bontoc (EL. 855 m) and 5.9 mm at Alimanao (EL. 30 m)

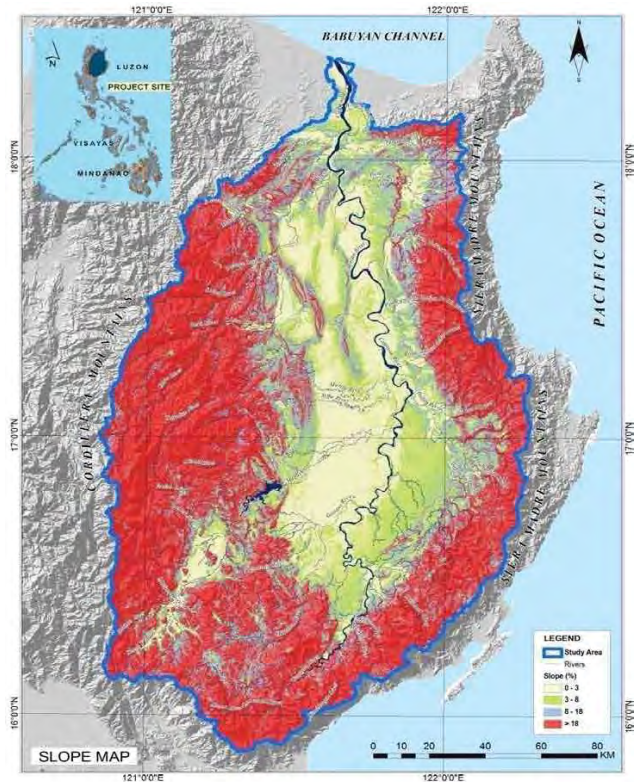


22

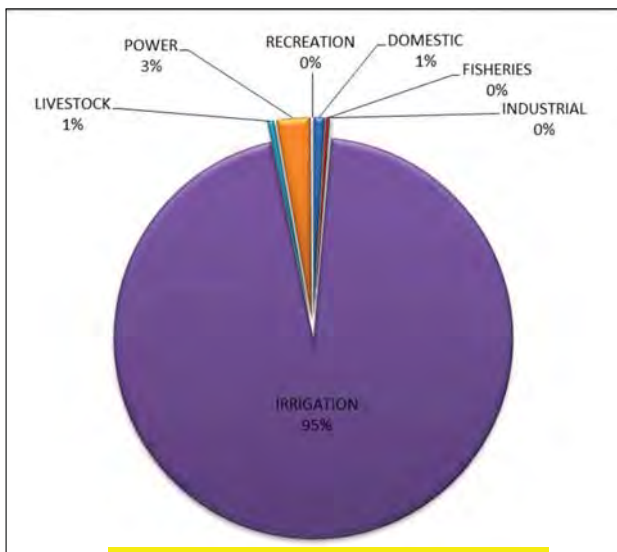
Slope Map

CRB has many sloped areas, with

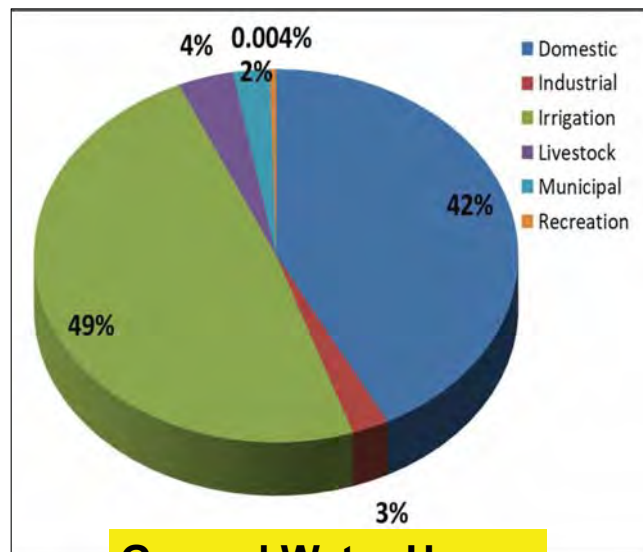
- 6,600 km² having slope of less than 8%,
- 3,400 km² from 8% to 18%, and
- 17,300 km² over 18% .



23



Surface Water Users



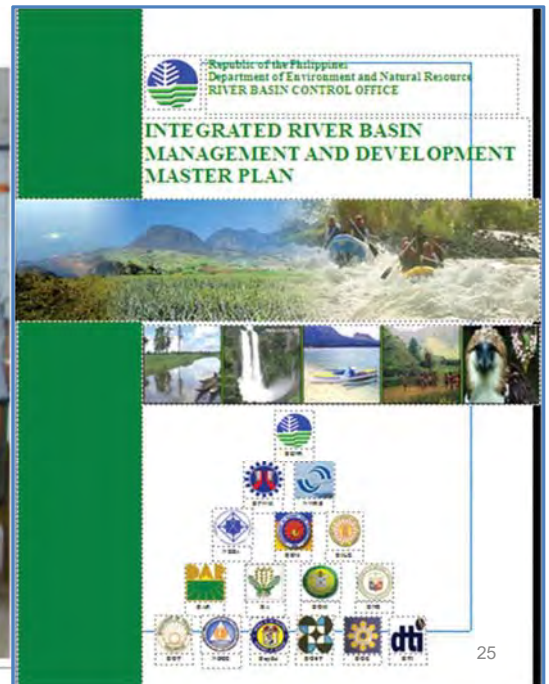
Ground Water Users

Consumptive Users of Water Resources

24

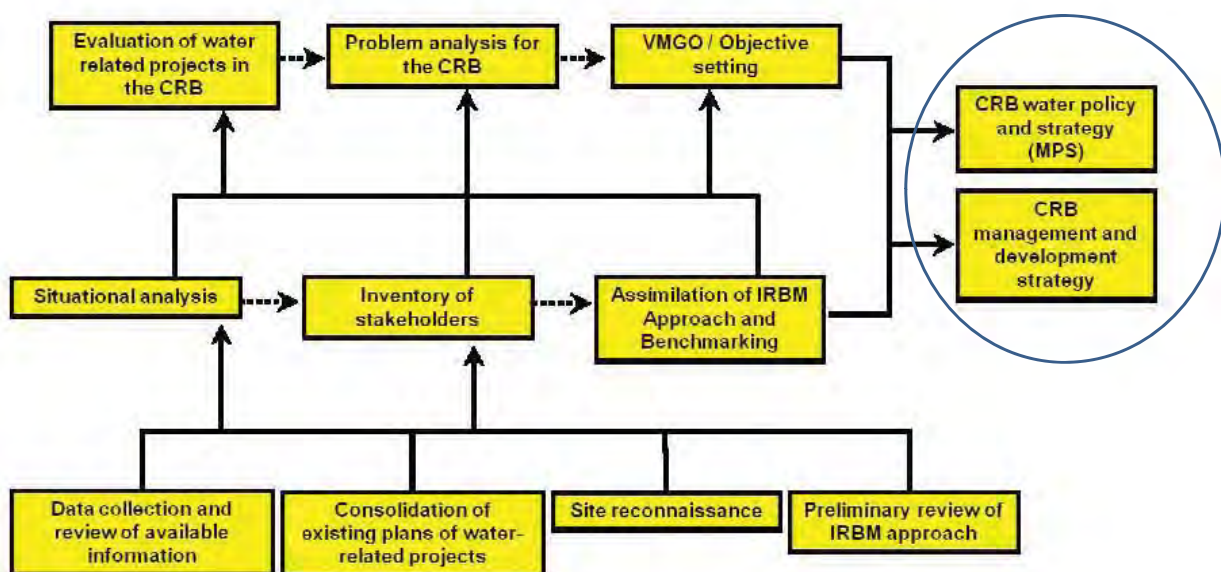
Development of 25-year River Basin Masterplan of 18 Major River Basins

Stakeholder Forum



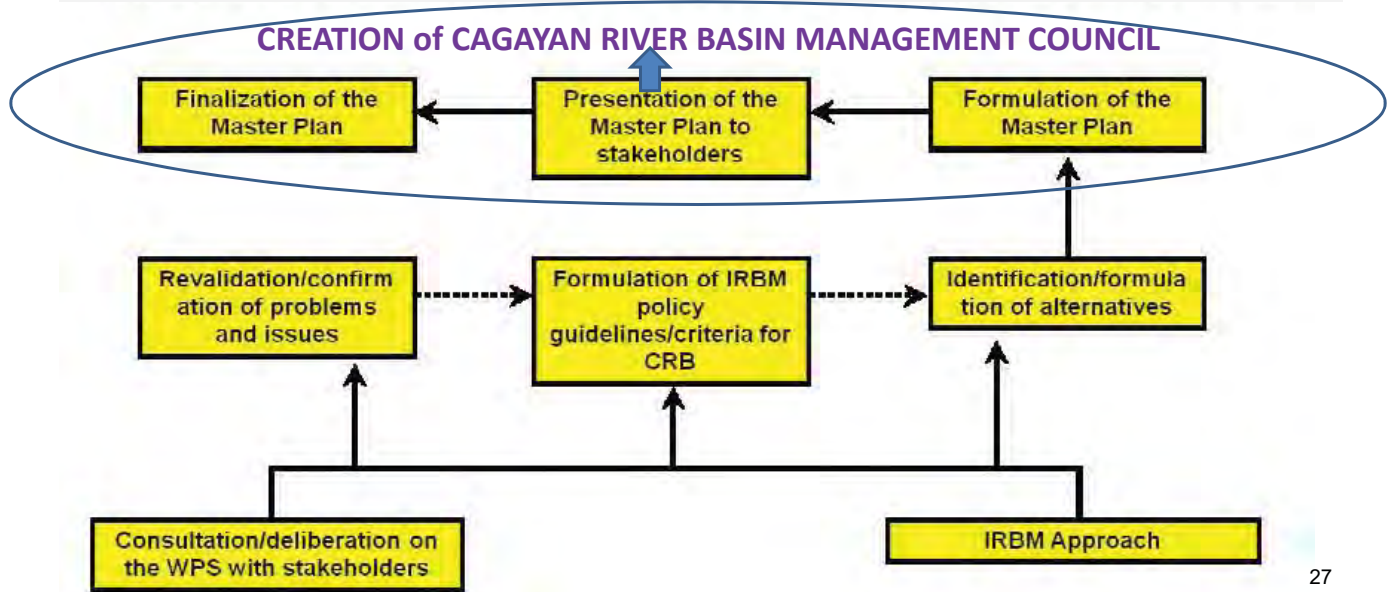
25

River Basin Master Plan Part1: Water Policy and Strategy Formulation for Cagayan River Basin(CRB) – 12 months



26

River Basin Master Plan Part2: *Plans, Programs, Activities for Cagayan River Basin(CRB) – 6 months*

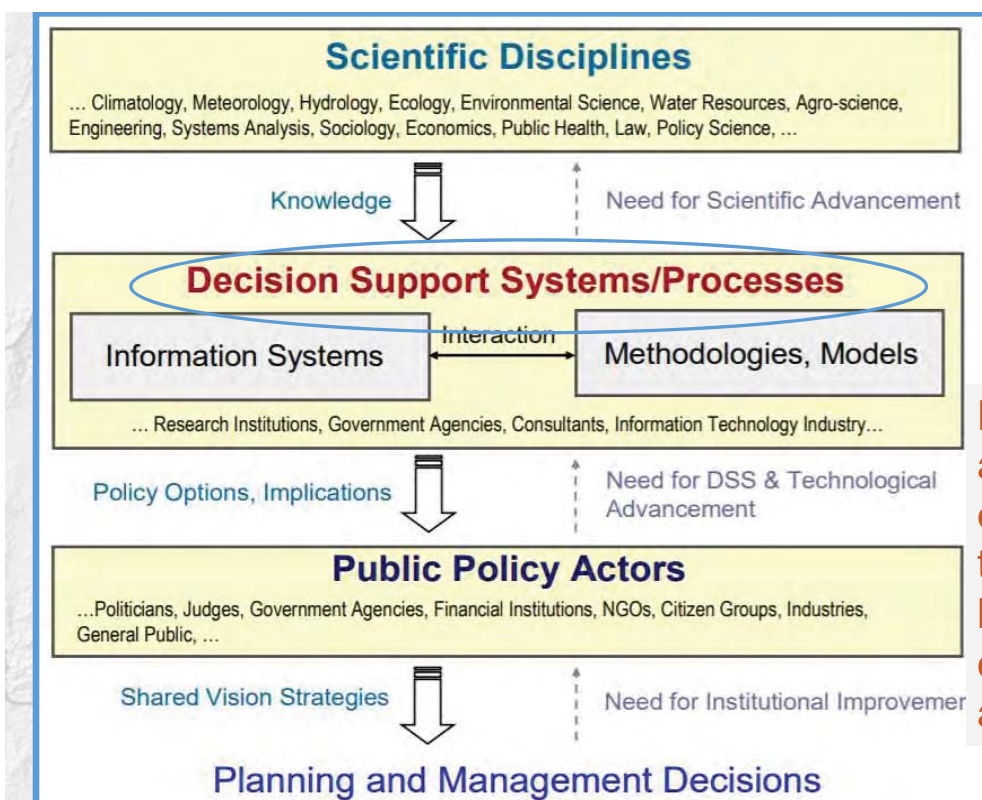


Research and Development (R&D) Integrated Framework: *Knowledge Generation to Policy Development*

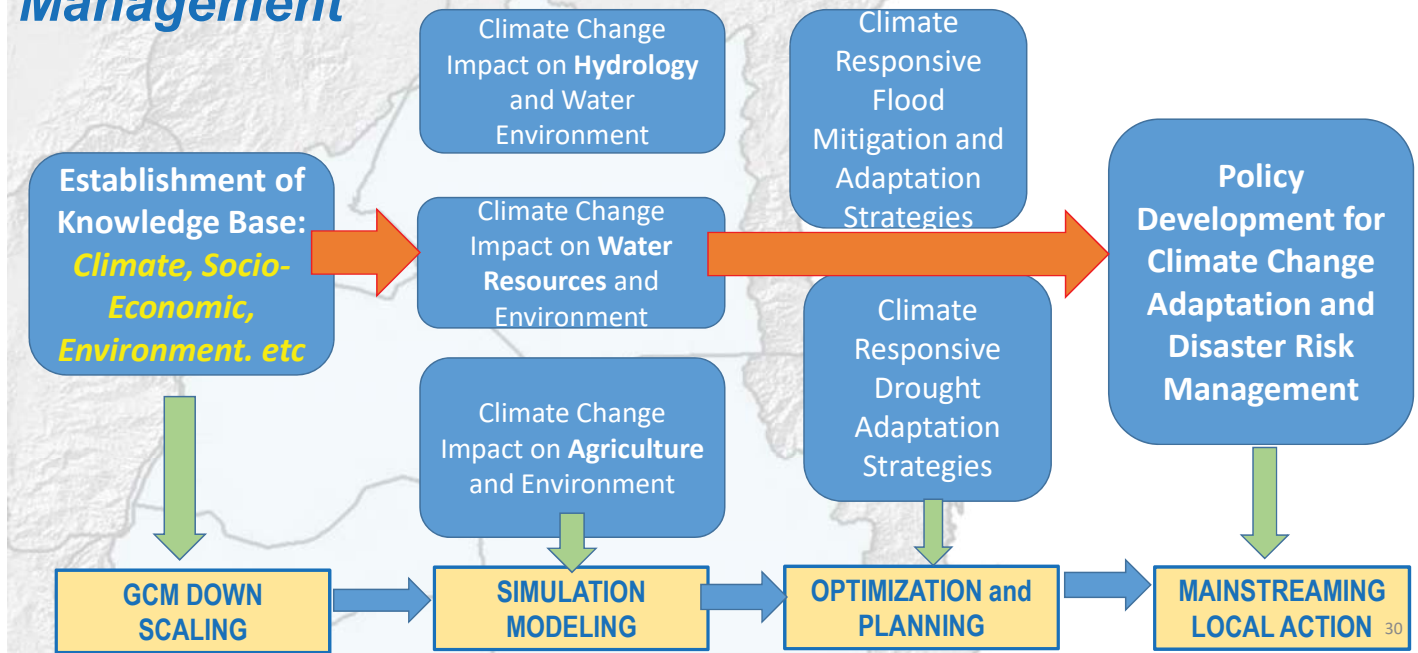


Decision Support Systems(DSS) in relation to IWRM and Management of Water-Related Hazards

Design, development, and use of DSS is an excellent opportunity that thread together a broad range of disciplines, people, and institutions



R&D Framework: *The Integrated Decision Support System Model for Climate Adaptation-Disaster Management*



HAEE DSS-ToolBox



Knowledge Base

ARCSWAT

WEAP

DSSAT

Flood-Depth-Area

Risk Assessment/Economics



Hydro-
Agriculture-
Environment-
Economic Model:
Decision Support System-ToolBox for Local Climate Adaptation Strategies and Water Hazard Management for Cagayan River Basin